

Student-Centered Learning: Feedback Workshop



Project goal: Provide an opportunity for advocates to come together to find ways to create a more student-centered learning ecosystem in Minnesota

What does the project entail?



Stakeholder Input and Data

Research and Recommendations

**Focus on
student-centered
learning**

**Stakeholder
survey**

Uncover themes

Workshops

**Research existing
policies and
regulations**

**Recommendations
for possible change**

Meeting Objectives:

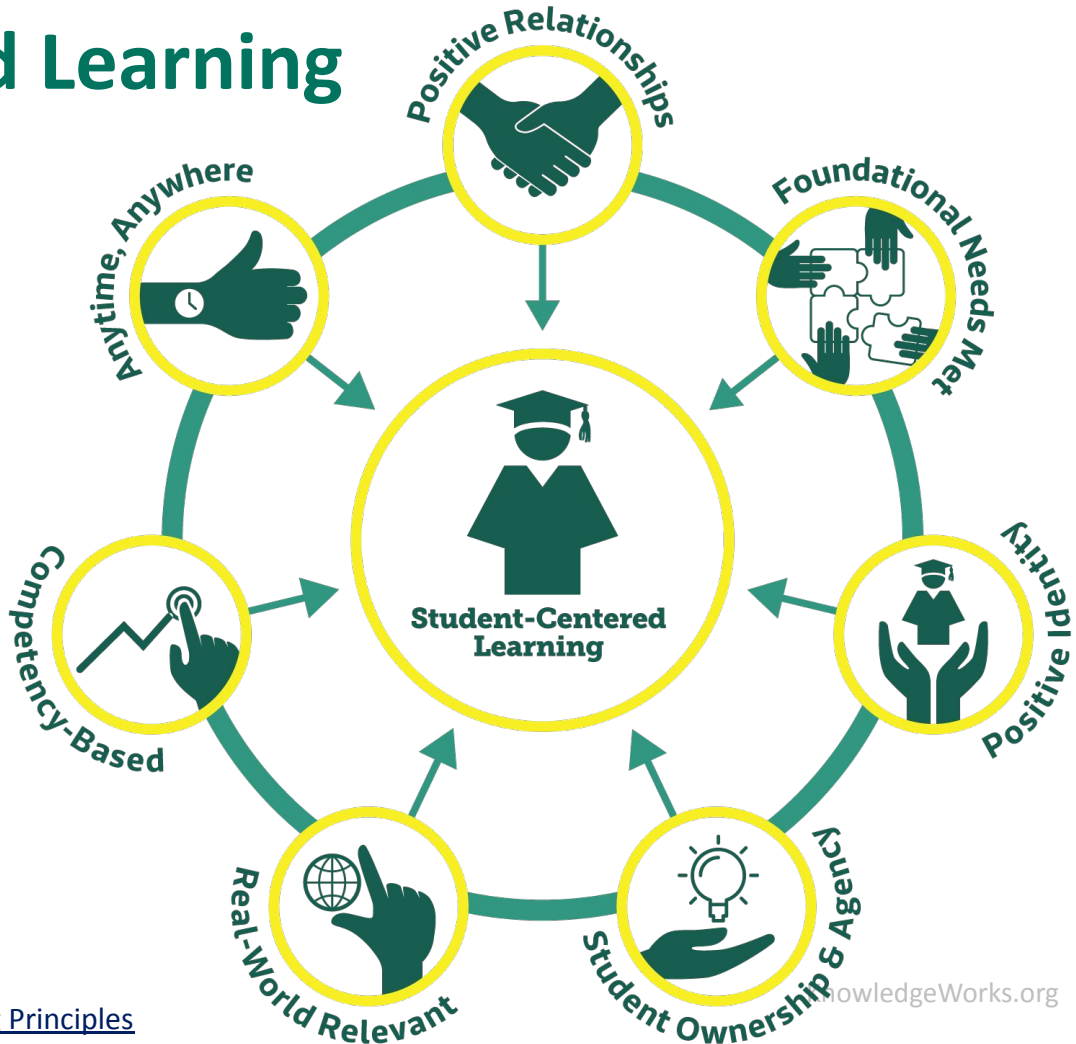
- ❑ **Uncover** trends from the AMSD/KnowledgeWorks survey
- ❑ **Envision** preferred future elements for student-centered learning
- ❑ **Discuss** current policy barriers to reaching an ideal future



Themes from the Survey



In Student-Centered Learning Spaces...



Source: [Education Evolving Student-Centered Learning Principles](#)

What and How We Surveyed

Issues contextualized within the context of student-centered learning

Questions based on KW's Policy framework, Ed Evolving's work & AMSD Priorities

Received feedback from stakeholders across the state

Survey Themes

Teacher and leader policies
Other barriers to innovation
State assessment structures
Student learning pathways
Funding
MDE structures



Envisioning Elements for a Preferred Future



What are the benefits futures thinking?



Adopt a futures-oriented, systems change-focused mindset



Take a long-term view



Surface and examine our assumptions and biases



Pressure test plans and anticipate unintended consequences



Grapple with and make decisions amid uncertainty



Take a fresh look at opportunities and challenges



Set, refine, and stay grounded in preferred futures



Set a collaborative, inclusive path forward

A Preferred Future of Learning Should...

- Energize and excite you.
- Help you decide your next step or action in difficult situations.
- Reflect your highest aspirations.
- Be based in love and care and hope for your community.

Elements of a Preferred Future: Example and Activity



Diving Deeper into the Data



Qualitative Data Quotes and Insights

- Digging into three big buckets:
 - **Teacher & Leader Policies** - training, licensure, professional development
 - **Culture of Innovation** - things that make it easier (or harder) to try new things (e.g., calendar requirements, seat time definition, the state's innovation zone)
 - **Assessments** - MN's existing system of state assessments

Qualitative Data Quotes and Insights

- Teacher & Leader Policies Insights:
 - Negative impact of existing licensure requirements
 - Lack of innovation in licensure, PD and training
 - Traditional teacher training orientation
 - State requirements aren't centered on students
 - Lack of training in evidence-based strategies (e.g., reading, literacy)

Qualitative Data Quotes and Insights

- Culture of Innovation Insights:
 - Too many requirements, hard to leverage existing flexibilities
 - Need flexibility within calendars, instructional time requirements
 - Innovation zone too restrictive, hard to get approval
 - Missing quality control mechanisms in areas like virtual learning

Qualitative Data Quotes and Insights

- Assessment Insights:
 - Questioning why MN hasn't pushed for flexibility from federal requirements
 - One-size-fits-all system, doesn't take into account student differences
 - Captures limited snapshot of student knowledge and skills
 - Places undue pressure on teachers and students
 - Takes time away from meaningful instruction

Considering Barriers to Implementation: Activity



In-Room Facilitation Instructions

- Walk among the categories in the room, providing insights on your experiences
- You may choose to stay in one area or move through all three
 - ***Teacher & leader policies***- training, licensure, professional development
 - ***Culture of innovation*** - things that make it easier (or harder) to try new things (e.g., calendar requirements, seat time definition, the state's innovation zone)
 - ***Assessments*** - MN's existing system of state assessments
- Please focus on negative and positive experiences, "+1" when you see similarities, and feel free to offer potential solutions

Thank you!!

Anne Olson
olsona@knowledgeworks.org

Jon Alfuth
alfuthj@knowledgeworks.org

